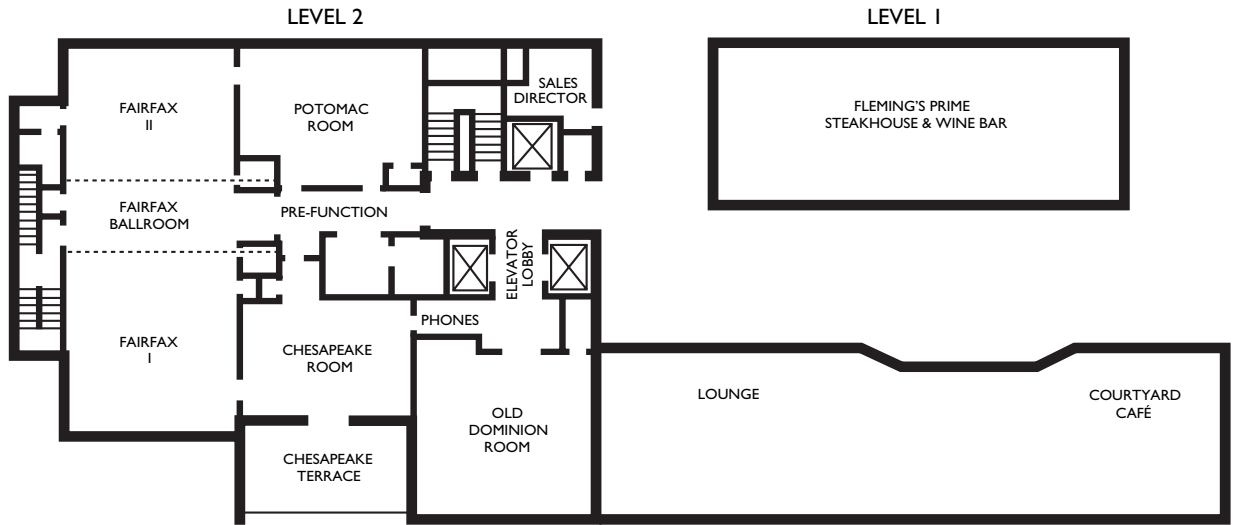


## FLOOR PLANS & CAPACITY CHART



Courtyard by Marriott								
Meeting Rooms	Dimensions (W x L x H)	Square Footage	Theater	School-room	Conference	U-Shape	Reception	Banquet
Fairfax Ballroom	58 x 26	1,502	150	80	50	53	120	80
Fairfax I	27 x 26	702	65	36	20	24	75	40
Fairfax II	26 x 20	520	45	25	20	17	45	30
Chesapeake Room	26 x 21	541	45	25	15	17	50	30
Chesapeake Terrace	23 x 12	276						
Potomac Room	28 x 21	588	40	20	15	15	30	
Old Dominion Room	26 x 24	624	55	35	20	25	65	30

### COURTYARD by MARRIOTT MEETING FACILITIES

- ✦ 4,000 flexible square feet of meeting, banquet and high tech conference space
- ✦ High Speed Internet Access
- ✦ State of the Art Audio Visual
- ✦ Teleconferencing Capabilities
- ✦ Dedicated Meetings and Conference Staff
- ✦ Complete banquet and conference staff and audio/visual team
- ✦ Well appointed Tavern and Dining area for up to 125 guests

### EXECUTIVE CONFERENCE AND TRAINING CENTER

- ✦ 4,000 square feet of IACC® approved meeting and high tech conference space
- ✦ All day continuous breaks
- ✦ 12-hour ergonomic chairs
- ✦ High Speed Internet Access
- ✦ State of the art audio/visual
- ✦ Dedicated Meetings and Conference Staff
- ✦ Hard surface tables

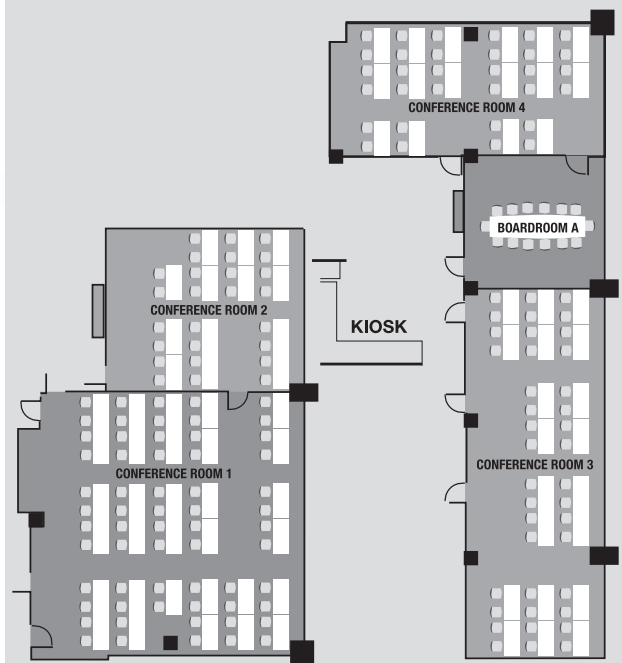
### ACCOMMODATIONS

- ✦ 229 Business Oriented Guest Rooms, including 16 Executive King Suites, and 8 Deluxe Whirlpool Spa Rooms
- ✦ Multi-line telephones with voice mail and hold features
- ✦ USA Today® delivered each week day morning
- ✦ Oversized, lighted work area, with ergonomic swivel chairs
- ✦ Complimentary High Speed Internet Access in all rooms and suites
- ✦ In-Room Coffee and Tea service

### RESTAURANTS AND LOUNGES

- ✦ Fleming's Steakhouse and Wine Bar—Offering USDA prime aged beef and over 100 wines by the glass
- ✦ Courtyard Café—serving classic American favorites for breakfast
- ✦ Capital Tavern—a relaxing setting for cocktails and conversation
- ✦ Over 50 Restaurants, Pubs and Lounges in area

## EXECUTIVE CONFERENCE AND TRAINING CENTER



### Tyson's Corner Conference Room Specifications

Rooms	Square Feet	Classroom	U-shape	Hollow Square	Conference
Conference 1	1722	60	36	40	—
Conference 2	750	30	26	26	20
Conference 3	1218	50	36	40	—
Conference 4	840	36	24	30	28
Boardroom A	400	—	—	—	14



**Courtyard by Marriott Tyson's Corner**  
 1960-A Chain Bridge Road  
 McLean, Virginia 22102  
 Phone: 703-584-2142 • Fax: 703-584-2146  
[www.courtyardtysonscorner.com](http://www.courtyardtysonscorner.com)  
[www.conferenceandtraining.com](http://www.conferenceandtraining.com)