

Courtyard by Marriott®
Tysons Corner, VA

COURTYARD®
Marriott

REFRESH YOUR
BUSINESS ROUTINE.





Courtyard by Marriott®

Tysons Corner

1960-A Chain Bridge Road
 McLean, VA 22102
 T 703.790.0207
 info.courtyardtysons@bfsaul.com
 www.courtyardtysonscorner.com



Location

Located in the heart of Tysons Corner in McLean, VA • Accessible to major area highways I-495 (Capital Beltway), VA Route 267 (Dulles Toll Road) and I-66 • Dunn Loring/Merrifield DC Metro Station 10 minutes • Midway between Washington Dulles International and Reagan National Airports • Only 11 minutes from downtown Washington DC • During the week transportation is provided to/from area businesses

Meeting Facilities

3,531 square feet of total meeting space • 1,500 square-foot Fairfax Ballroom, accommodates up to 150 • Up to four breakout meeting rooms available • Break Kiosk offering refreshments throughout your meeting • Foyer for gatherings • In-house audiovisual support • Wi-Fi high-speed Internet access

Guest Room Amenities

11 floors • 213 spacious guest rooms and 16 suites • Large well-lit, flexible work desk, ergonomic chair • Comfortable sitting area • Individual climate control • AM/FM alarm clock radio • 32" LCD TV's with Direct TV • HBO • Telephone with message light and data port • Wired and wireless high speed Internet access

Facilities & Services

Complimentary shuttle to Dunn Loring/Merrifield DC Metro Station • Indoor heated pool and whirlpool • Exercise room • Golf and tennis nearby • Biking and jogging trail nearby • The Courtyard Café serving breakfast daily • Room service • Flemings Steakhouse & Wine Bar located on main level • Free parking • The Market, a 24/7 self-serve pantry • Complimentary newspapers available at the front desk

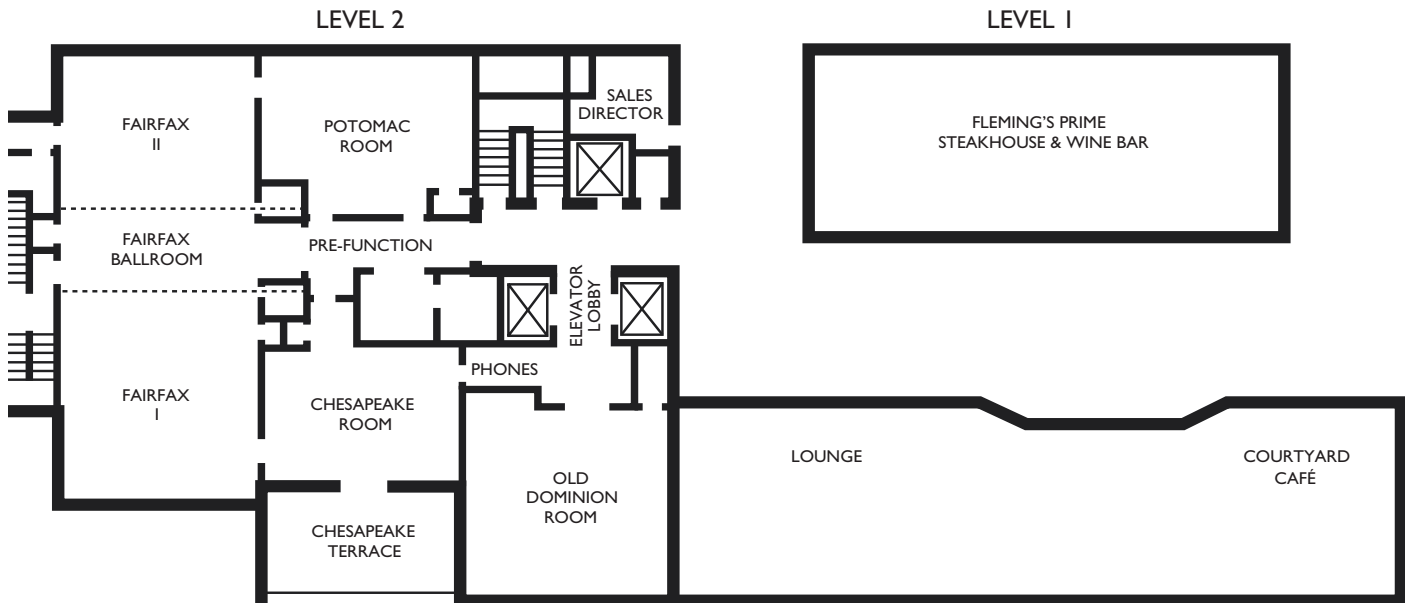
Attractions

Wolf Trap Performing Arts Center • Tysons Corner Shopping Center • Tysons Corner Galleria • Meadowlark Botanical Garden • National Air & Space Museum's Udvar Hazy Center • National Mall & Washington DC attractions • DC's Wine Country

Local Companies

Wachovia "a Wells Fargo Company" (.1M) • Pricewaterhouse Coopers (.1M) • Booz Allen Hamilton (.3M) • SAIC (.3M) • Ernst & Young (.5M) • Freddie Mac (1M) • Gannett (1M)

IT'S A NEW STAY.



Meeting Rooms	Dimensions (W x L x H)	Square Footage	Theater	School-room	Conference	U-Shape	Reception	Banquet
Fairfax Ballroom	58 x 26	1,502	150	80	50	53	120	80
Fairfax I	27 x 26	702	65	36	20	24	75	40
Fairfax II	26 x 20	520	45	25	20	17	45	30
Chesapeake Room	26 x 21	541	45	25	15	17	50	30
Chesapeake Terrace	23 x 12	276						
Potomac Room	28 x 21	588	40	20	15	15	30	
Old Dominion Room	26 x 24	624	55	35	20	25	65	30